

TABLE OF CONTENTS

- [Newsletter #41 - 27/06/2015](#)
- [UCM Heavy Hazard Suits](#)
- [Scourge Screamer and Raider Dropship](#)
- [PHR Medusa and Triton-X](#)
- [Shaltari Pungari Auxiliaries](#)
- [Gen Con 2015](#)
- [RISE Gallery Exhibition - 2670](#)

IN THE NEXT NEWSLETTER

[New Releases](#)

[Gen Con 2015](#)

[Autumn Invasion 2015](#)

Newsletter #41 - 27/06/2015

Celebrating Summer

The summer's here, and to celebrate we've got a jam-packed newsletter full of good things to share.

There are **new releases (now available for pre-order)** for the UCM, Scourge, PHR and Shaltari now available for pre-order. We'll also have the next wave of famous commanders from our Reconquest: Phase 1 book out soon too – look out for more details to come.

A highlight of the season for us is Gen Con, Indianapolis (USA), where we will be giving introduction games, showing of our studio models – including, the Avenger – and offering a selection of upcoming releases slightly early for those who are at the show. We hope to see you there!

Though we go to as many shows as possible, we know that not everyone can make it and therefore can't get a few of the items that we mainly only take to shows. This summer we are intending to alter this very slightly by offering a few products that normally are only at our shows, through our website, (though the show only models will always be just that!). We are also in the process of creating a few web exclusive products that you can't get anywhere else, such as add-on scenery packs and a few more accessories.

We are also excited to be showcasing a small collection of our work, both images and models, in an exhibition at the [RISEgallery](#) in Croydon (UK) ([Click here for the facebook event page](#)). This will be another chance to see the spaceship on show too for anyone who is still keen to see it and hasn't yet.

But now, on to the new releases...

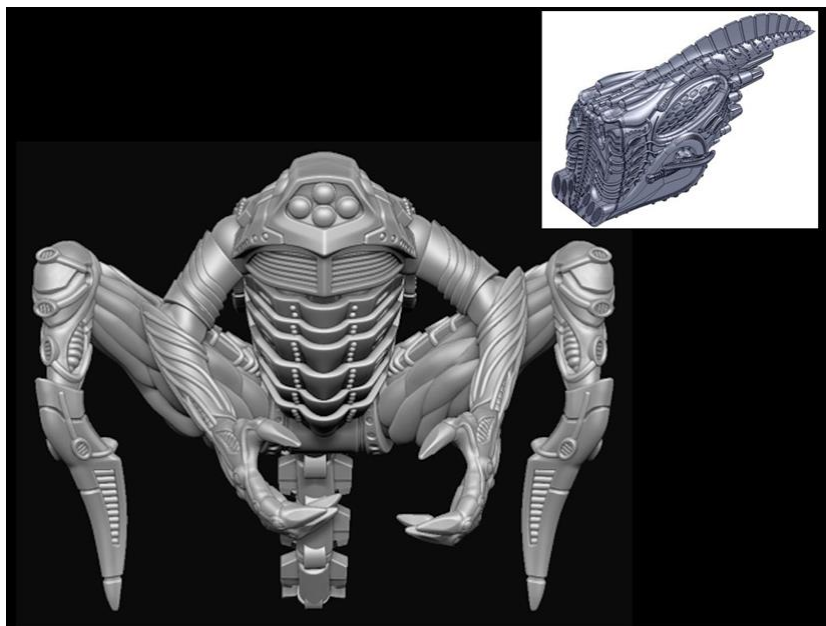
UCM Heavy Hazard Suits



Heavy Hazard Suits were developed for working in extreme conditions on frontier worlds and on the outside hulls of ships. Since 2653, many Heavy Hazard Suits have been used as pickets in areas where hostile aliens and fauna are frequent threats – militarising them was the next logical step.

Removing the original civilian systems freed up space for the capacitors and hyper accelerators needed for a suit-portable railgun.

Scourge Screamer and Raider Dropship



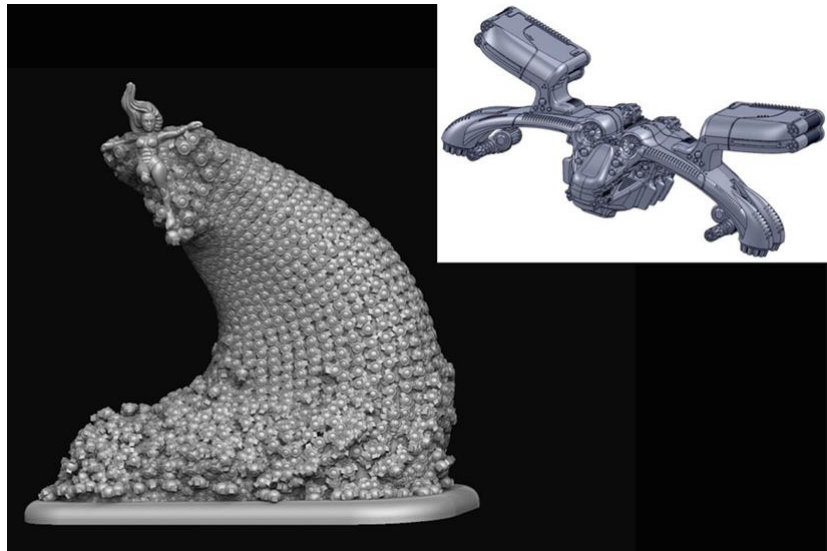
The Screamer is a chillingly familiar unit to Resistance fighters, but is only now being encountered by UCM troops. Unlike many enemy units, it is rare that the Screamer is visually identified.

The Screamer is a consummate terror weapon, part of a second wave of any Scourge invasion to root out pockets of resistance and demoralise any survivors, breeding a miasmic sense of despair as it scuttles with chilling speed towards its prey. In addition to its already potent mental weapons, the Screamer is armed with sets of powerful, metal sheathed claws which in conjunction with its massive size and

augmented musculature make it more than capable of ripping a heavy battle tank to shreds.

The Raider is a dedicated insertion platform for esoteric and specialist Scourge units. It is designed to fully envelope bulky units that have highly specific mission parameters, often as outliers to the main Scourge force. Horrific weapon systems complete the package, supporting the elite troops it disgorges with lethal anti-personnel acid hoses comparable to those on a Tormentor heavy battle tank.

PHR Medusa and Triton-X



While little that is known of PHR Siren corps, one thing is very clear; these women are the elite, and exceptionally few in number. However even among the rarest individuals there are exceptional specimens – those whose innate affinity with their technological enhancements allow them to effortlessly control many hundreds of viewpoints with ease, and many thousands with dedicated training and further honing of their talents.

These are **the Medusa**, the 0.0001 % of the PHR's population capable of harnessing the power of thousands of slaved Familiars to their will with devastating effect. In battle, a Medusa will appear to 'fly', levitated on a swarming, seething pillar of nanomachines and Familiars, sowing destruction and aiding her allies in combat until the enemy is utterly destroyed.

The Triton–X is a specially modified transport for Medusa units. The fact that the PHR has created a specific transport to carry these exceptional women into the fray reflects their immense power. It also has the capacity for additional nanomachines, which can replenish and repair any losses that the Medusa's swarm might sustain from enemy fire.

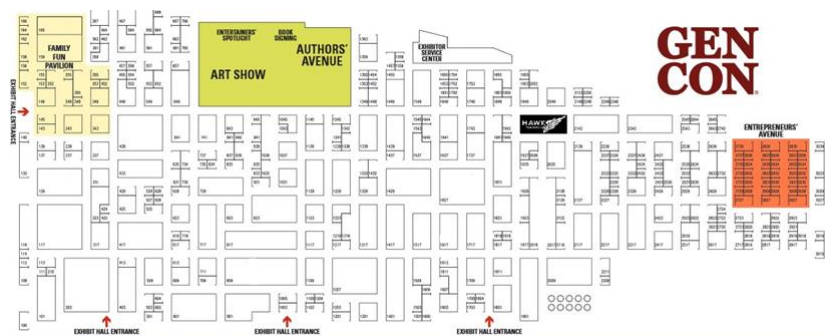
Shaltari Pungari Auxiliaries



The discovery of the cradle worlds and very foundation of the UCM can be traced to the first contact with the Shaltari and their help in exploring the galaxy. However, the less than altruistic designs that the Shaltari apparently had for using humanity as cannon fodder quickly put paid to any thoughts of long term alliance.

In **the Pungari**, it seems the Shaltari have found a much more pliant (if less capable) race to exploit. Despite their obvious mental and technological inferiority to their masters, they are slavishly devoted to the Shaltari and appear willing to die in large numbers for them should one be present to witness their sacrifice.

Gen Con 2015



Gen Con has always been one of the many highlights in our events year, and 2015 is no different. We will be located on stand 1943, and will have the June releases and hopefully some of the new Famous Commanders, as well as pre-releases of July's units. We'll also have the Avenger on the stand, along with our show only models and limited edition show only spaceship models!

RISE Gallery Exhibition - 2670



The new exhibition at the RISE Gallery called '2670' will feature work from David J Lewis and Patrice Rameau. It will showcase a range of unseen and remastered artwork, along with the Avenger.

The exhibition is open from Friday 3th July until Thursday 17th July from Tuesdays to Fridays 10am – 6pm and on Saturdays 10am – 4pm. For more information, check out the [RISEGallery website here](#), or [the facebook event page here >](#)

Alongside our artwork, will be works from a collection of famous artists, such as Andy Warhol, Damien Hirst, and Banksy, to name a few. We hope you can make it down to have a look at the show.

We hope you're as excited about this summer's Dropzone Commander releases, exhibitions and shows as we are, and we look forward to seeing you soon at one of these events.

– The Hawk Wargames Team

You're receiving this because you accepted to receive marketing.

Edit your subscription | Unsubscribe

17-21 George Street,
Croydon,
CR0 1LA

www.hawkwargames.com